

OUR HOTEL SOLUTION



Business Centers

Our SmartCenter solution provides a hassle-free platform for your guest Internet needs. Here's XXX reasons how:

1.

Our solution features optional touch-screen PCs and each one is hardwired with easy-access USB ports for printing.

2.

We understand marketing is important to your business. So, we design and customize the opening portal page, so your customers always keep your business top of mind.

3.

Project Installation: Our in-house project management and engineering teams oversee equipment provisioning, circuit integration, on-site engineering, cabling and more.

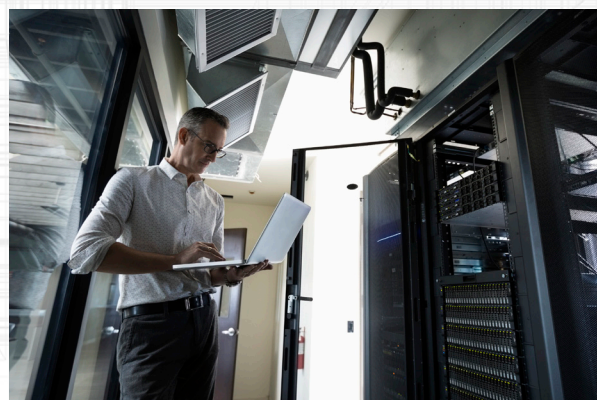
4.

Quality Assurance Testing, Routine Reporting:

Our Dashboard keeps you on top of your network's connectivity through on-screen displays that give you an easy-to-read, real-time view of your network.

5.

Support Services: Our Help Desk is 24/7/365 and our nationwide network of 300+ certified technicians can arrive at any customer site within either 4 or 24 hours.



Learn about our history:

blueprintrf.com/about-us/our-story/



Learn more about us:

blueprintrf.com/why



Follow us for news and insights:

[linkedin.com/company/blueprint-rf](https://www.linkedin.com/company/blueprint-rf)