

Blueprint RF's platform architecture starts with Dominion: A cutting-edge, on-site network appliance that delivers all the features found in three separate network appliances.

1. Circuit Load Balancing
2. Gateway Authentication
3. Packet Shaper

Since Dominion is a single appliance, one OS platform allows all features to work in a seamless fashion – from end-to-end. When three separate appliances are used, as is commonly the case today, disparate device operating systems do not interact smoothly. Many useful features must be disabled for the entire stack to pass Internet traffic without incident. Dominion features a single, seamless operating platform and is also far less costly than the typical “network stack” while at the same time consuming significantly less energy to operate.

**Seamless HSIA architecture** housed in one powerful controller appliance:

**Bandwidth Aggregation:**

Standard Controller comes with 3 WAN ports  
300 mbps throughput capacity (total bandwidth)  
Layer 3 design – true failover (if any WAN fails, device continues to operate)  
Off site configuration backup and recovery  
Device specific and cloud-hosted console for throughput reporting  
Link monitoring for pro-active notification of circuit failure

**Gateway Control**

DHCP, DNS, DNS Forwarding, Multiple VLANs, SNMP support  
Captive Portal (a.k.a. Splash page)  
Supports RADIUS authentication, Access Codes and post-authentication redirection  
Firewall  
NAT and Port Forwarding  
VPN Support

**Deep packet inspection and shaping**

Allows bandwidth capping of download/upload speed per user or traffic type  
Prioritize QOS traffic, like VPN and VoIP  
Slow down P2P traffic, or block it (set prioritization)  
Streamline low level traffic to maintain highest supportability  
Traffic reports (by user, website, or predefined category – e.g. web traffic, VPN, peer-to-peer, streaming media, etc.)

**Energy Monitoring & Management** (ready)

Controller designed to support Cisco Mediator  
Mediator – router-like device connects to building appliances for energy monitoring  
Mediator translates disparate appliance OS to TCP/IP  
Controller organizes translated data for cloud-hosted energy console

# DOMINION

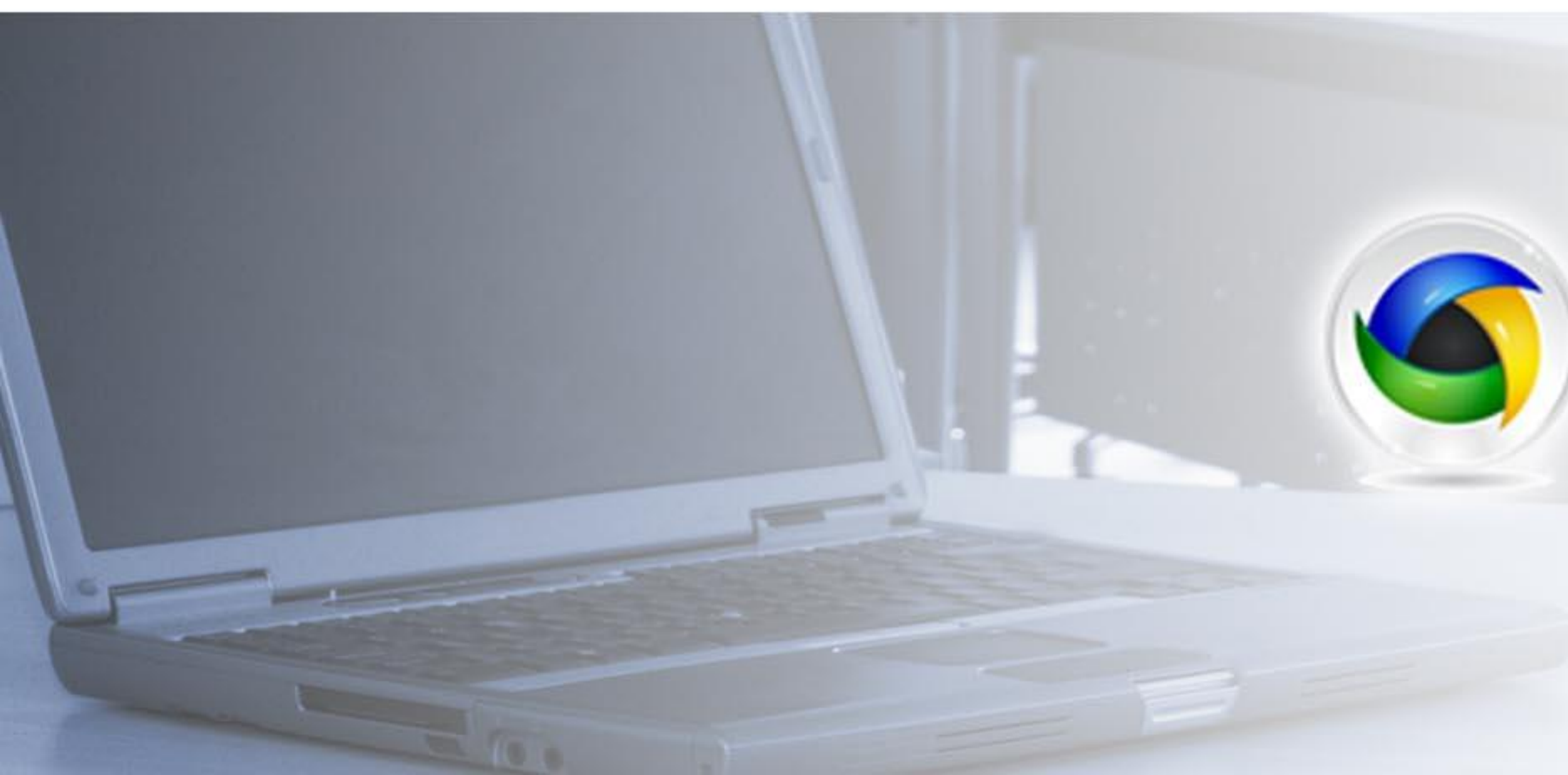
One Device.  
The Functionality of Three.



**Complete Dashboard Design**

Number of sessions and unique users  
Trouble ticket details – call recording  
Circuit availability view – individual and total  
Network health monitoring – each device  
Internet traffic reports – by category and site  
Energy monitoring (with Cisco Mediator)  
Customizable reports – queries and drill down  
Permissions-based access via login

**For more information visit us at [www.blueprintrf.com](http://www.blueprintrf.com), or to see DOMINION in action, call us at 1-877-530-0820 or email [sales@blueprintrf.com](mailto:sales@blueprintrf.com)**



**BLUEPRINT RF**  
network services • green solutions

Blueprint RF  
5555 Oakbrook Parkway Suite 640  
Norcross, GA 30093  
1.877.530.0820